

# Service of Worship

10:00 AM

+Please stand where indicated if it is comfortable for you.  
All are welcome in this place of worship.  
As you are seated, please silence your cell phones.  
For those with infants a staffed nursery is available.

## Gathering

### PRELUDE

*Christians, Awake, Salute the Happy Morn* arr. Lyndell Leatherman

*Silence is kept during the prelude to prepare our hearts for worship*

### WELCOME AND ANNOUNCEMENTS

Linden Hustedt, Lay Leader

### CHIMING OF THE TRINITY

### +CALL TO WORSHIP

Christ is born; give him glory!  
**Christ has come down from heaven; receive him!**  
**Christ is now on earth; exalt him!**  
O you earth, sing to the Lord!  
**O you nations, praise him in joy, for he has been glorified!**

### +PROCESSIONAL HYMN #179

*"O Sing a Song of Bethlehem"* Kingsfold

### +OPENING PRAYER

Almighty God, by the birth of your holy child Jesus you gave us a great light to dawn on our darkness. Grant that in his light we may see light. Bestow upon us that most excellent Christ gift of love to all people, so that the likeness of your Son may be formed in us, and that we may have the ever brightening hope of everlasting life; through Jesus Christ our Savior. Amen.

### +GLORY BE TO GOD, CREATOR

Glory be to God, Creator, glory be to God the Son, glory be to God the Spirit, known as Three, yet God the One. As it was in the beginning, it is now and so shall be in a world without ending, glory through eternity. Holy, holy God Almighty, holy, Prince of Peace, holy, holy wind of Presence, holy, holy, holy. Amen.

### CHILDREN'S MESSAGE

The Rev. Dr. Matthew M. Williams

## Proclamation

### PRAYER OF ILLUMINATION (In unison)

**Holy God: as your word is read and proclaimed, gather the nations to be one family, and draw us into your holy life through the birth of Emmanuel, our Lord Jesus Christ. Amen.**

### NEW TESTAMENT LESSON

Hebrews 2: 10-18 Pew Bible NT Page 205  
The Word of the Lord  
*Thanks be to God*

### +HYMN OF PREPARATION #219 vs. 1-2

*"What Child Is This"* Greensleeves

### +GOSPEL LESSON

Matthew 2: 13-33 Pew Bible NT Page 2  
The Word of God for the People of God  
*Thanks be to God*

### +HYMN OF PREPARATION #219 vs. 3

*"What Child Is This"* Greensleeves

SERMON Dreams and Movement The Rev. Matthew M. Williams

## Response

### +AFFIRMATION OF FAITH #881 The Apostles' Creed

**I believe in God the Father Almighty, maker of heaven and earth; and in Jesus Christ his only Son our Lord, who was conceived by the Holy Spirit, born of the Virgin Mary, suffered under Pontius Pilate, was crucified, dead and buried.**

**The third day he rose from the dead; he ascended into heaven, and sitteth at the right hand of God the Father Almighty; from thence he shall come to judge the quick and the dead.**

**I believe in the Holy Spirit, the holy \*catholic church, the communion of saints, the forgiveness of sins, the resurrection of the body, and the life everlasting. Amen.**

### HYMN OF ADORATION #347

*"Spirit Song"* vs. 1 & 2

*Spirit Song*

### MORNING PRAYER

### THE LORD'S PRAYER #895

**Our Father, who art in heaven, hallowed be thy name. Thy kingdom come, thy will be done on earth as it is in heaven. Give us this day our daily bread. And forgive us our trespasses, as we forgive those who trespass against us. And lead us not into temptation, but deliver us from evil. For thine is the kingdom, and the power, and the glory, forever and ever. Amen**

### OFFERTORY PRAYER

### OFFERTORY

*Infant Holy, Infant Lowly* arr. Michael Ryan

### +DOXOLOGY 94

*Lasst Uns Erfreuen*

**Praise God from whom all blessings flow!  
Praise God all creatures here below!  
Alleluia! Alleluia!  
Praise God the source of all our gifts!  
Praise Jesus Christ, whose power uplifts!  
Praise the Spirit, Holy Spirit!  
Alleluia! Alleluia! Alleluia!**

### +PRAYER OF CONSECRATION

## Sending Forth

### +RECESSIONAL HYMN #246

*"Joy to the World"*

*Antioch*

### +BENEDICTION

### +POSTLUDE

*Join the Triumph of the Skies!*  
Mendelssohn/Wade, arr. Douglas E. Wagner

## CONNECT CARD



### WELCOME! We'd like to

help you get connected.

Please fill out this card & place it on the offering plate.

Let us know how we can reach out to you!

Name \_\_\_\_\_

Address \_\_\_\_\_

City \_\_\_\_\_

Zip \_\_\_\_\_ Phone \_\_\_\_\_

Email \_\_\_\_\_

How long have you attended LH Church?

1st time guest  2nd time guest

guest from out of town

regular attendee  member

I am interested in:

Having the Pastor Contact Me

Youth and Families

Small Groups

Missions

United Methodist Women

Men's Fellowship Group

Strawberry Festival Volunteer

Stephen Ministry

Greeting and Ushering

Communion Stewardship

Fellowship Hour Hospitality

Singing in the Choir

Membership

## PRAYER REQUESTS

In everything by prayer...  
Let your requests be made known  
unto God.

Philippians 4:6

Please write your request here  
and place it in the offering plate or  
hand it to an usher.

Please pray for

---

---

---

Requested by

---

Date \_\_\_\_\_

Phone number ( ) \_\_\_\_\_

Email \_\_\_\_\_

**PRAYER REQUESTS ARE HONORED  
UNTIL NOTIFICATION IS RECEIVED  
OTHERWISE. PLEASE KEEP US UP-  
DATED AT 941-964-2479**

I would like someone to  
contact me to pray over  
more confidential  
matters.

# Welcome!

All are welcome into the life and ministry of the United Methodist Church. We are honored that you are here. Please join us for refreshments after the service in the Fellowship Hall. We hope you will worship with us again as we continue to discover the difference God's love makes in our lives! For those with infants, a staffed nursery is available; please ask one of the ushers for directions.

**VISITORS, PLEASE PICK UP A GIFT BAG IN THE NARTHEX AS A  
TOKEN OF OUR APPRECIATION!**

### THE 2020 STRAWBERRY FESTIVAL NEEDS YOUR "STUFF"

If you have household items, jewelry, books, art work, linens, toys and games you would like to contribute, please drop them off at the Lighthouse Methodist Church OFFICE in Boca Grande from 10 a.m. to 2 p.m. on Monday through Thursday. Or contact Jan Myers at 941-964-0562 to set up delivery to her home.

We will accept any item of furniture that can be carried by one person, such as a lamp or very small table, for the bargain and boutique areas. Thank you!

### CHOIR REHEARSALS SCHEDULED TO RESUME

Choir rehearsals will resume on January 2, 2020. Rehearsals will begin at 4 PM and end at 5:30 PM. I plan to have the choir begin singing for the 10:30 AM worship service on Sunday, January 12<sup>th</sup>. There will be a brief warm up rehearsal, each Sunday, beginning at approximately 9:50 AM in the sanctuary. It will be a pleasure to reconnect with returning choir members and to welcome new faces as we join in fellowship and share our time and talents while lifting our voices in musical praise to God. May each of you be filled with God's abundant blessings during this Advent season of anticipation and fulfillment, and as we enter a new year. ~David Hamblin

### HARRY CHAPIN FOOD BANK

The annual Harry Chapin Food drive has begun! Please donate canned and nonperishable foods in the barrels located at the main church entrance and at the Administrative Office at 325 W. Third St. Thank you!

### UMW LUNCHEON – Monday, January 20

11:30-1:00 Fellowship Hall

Catherine Zagari, manager of Fresh Produce, will show us some of the hottest new fashions for this season. Look for familiar faces on the runway. Bring a sack lunch. Beverages and dessert will be provided.

### THANK YOU FOR YOUR INVESTMENT!

Prayers, presence, gifts, service, and witness

Our gifts as of December 15, 2019

2019 OPERATING BUDGET	<u>\$600,000.00</u>
PLEDGES, OFFERING, PLATE RECEIVED	<u>\$565,876.00</u>
MISSION GIVING	<u>\$163,362.00</u>
UMW MISSIONS	<u>\$69,000.00</u>
CAPITAL CAMPAIGN	<u>\$1,796,856.00</u>

## Special Thanks for Serving in the Lord's House today!

**Ushers:** Debbie & Rich Houck

**Liturgist:** Candy Rost



PO Box 524. Boca Grande, FL 33921

941-964-2479

[www.bglighthouseumc.com](http://www.bglighthouseumc.com)



[www.facebook.com/bglighthouseumc](http://www.facebook.com/bglighthouseumc)



A Stephen Ministry  
Congregation

## Contacts

The Rev. Dr. Matthew M. Williams, Senior Pastor  
[mwilliams@bglighthouseumc.com](mailto:mwilliams@bglighthouseumc.com)

Rich Steinhelper, Minister of Pastoral Care  
[rsteinhelper@bglighthouseumc.com](mailto:rsteinhelper@bglighthouseumc.com)

Anna Boney, Director of Children's Ministries  
[aboney@bglighthouseumc.com](mailto:aboney@bglighthouseumc.com)

Amanda Pearsall, Administrative Assistant  
[apearsall@bglighthouseumc.com](mailto:apearsall@bglighthouseumc.com)

Cindy Handrick, Financial Assistant  
[chandrick@bglighthouseumc.com](mailto:chandrick@bglighthouseumc.com)

David Hamblin, Director of Music  
[dhamblin@bglighthouseumc.com](mailto:dhamblin@bglighthouseumc.com)

Philip Eyrich, Assistant Organist

Mike Hilton, Audio/Video Technician  
[mhilton@bglighthouseumc.com](mailto:mhilton@bglighthouseumc.com)

Carol Elwood, Choir Director

Al Nethery, Accompanist

Cindy Crespo, Sexton

Gabriela Crespo, Nursery Attendant

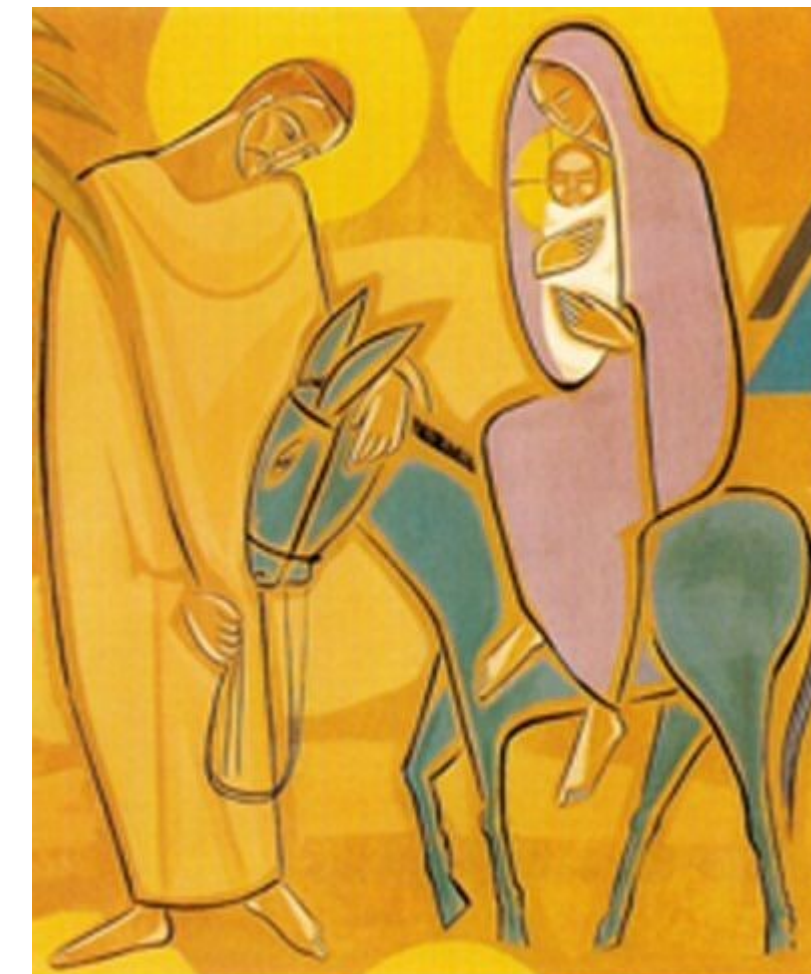


BOCA GRANDE  
**Lighthouse Church**  
A United Methodist Congregation

## December 29, 2019

### First Sunday after Christmas Day

*Receiving the Light, Being the Light, Sharing the Light*



The scripture lessons for the first Sunday of Christmas open with the phrase "I will recount the gracious deeds of the Lord" - a fitting passage to acknowledge God's overflowing kindness in the gift of his son Jesus. The author of Hebrews points to the ways in which Jesus identifies with us in our humanity. In the words of early church historian Irenaeus, "He became what we are, that we might become what he is." The lesson from Matthew shows that Jesus' suffering began early. As King Herod seeks to kill the children of Israel, Jesus becomes a child refugee and his family is forced from their homeland out of fear.